



A Member of Covenant Health

An abstract painting with vibrant colors including yellow, orange, red, blue, and green, with visible brushstrokes and a textured surface.

Love & Hope

Foundation Annual Report
2021

OUR MISSION

We are a Catholic health ministry, providing healing and care for the whole person, in service to all in our communities.

Values

Our Judeo-Christian tradition compels us to promote Gospel values in all of our endeavors. We commit to honor these core values:

COMPASSION

We show respect, caring and sensitivity towards all, honoring the dignity of each person, especially the poor, vulnerable and suffering.

INTEGRITY

We promote justice and ethical behavior, and responsibly steward our human, financial and environmental resources.

COLLABORATION

We work in partnership, dialogue and shared purpose to create healthy communities.

EXCELLENCE

We deliver all services with the highest level of quality, while seeking creative innovation.

In 1888, the Sisters of Charity of Saint-Hyacinthe established a healing ministry to meet the needs of this community. In the spirit of the Sisters and their foundress, St. Marguerite d'Youville, St. Mary's Health System will continue its unwavering commitment to provide holistic care, offered with respect and compassion, for all in our community.

Board of Directors

Mark Anthoine, Board Chair
James Place, MD, Vice Chair of Board
Donald Bevers, Treasurer*
Ralph Harder, MD
Lena Hartley
Kathy McManus
David Geiger, Esq
Steve Ouellette
Jeffrey Davila, MD
Anne Brown, MD
Deacon John Murphy, MD
Steve Jorgensen,
President SMHS/SMRMC*

** Ex officio, nonvoting member*

2021: LOVE & HOPE

Dear Friend,

It has been quite a year at St. Mary's Health System. As bestselling author Bob Goff writes, love and hope are two powerful anchors in our lives. The love and hope of our community — especially your continued generosity — carried us through 2021. In 2021, 677 donors made commitments totaling \$1,779,292.43.

Whether you supported us with the priceless gift of your time, shared your knowledge and expertise, or made a timely financial gift, please know it made a difference for all of us at St. Mary's.

During what has been a difficult time for everyone, you showered hope and love on our staff. They extended that gift to your family, friends and neighbors who receive care from us and throughout our greater community. Thanks to your support, we were able to focus on what matters most — providing exceptional and compassionate care for the people who turned to St. Mary's when illness or injury disrupted their lives.

Did you know that giving is a fundamental human need? It helps create friendships, inspires others to be generous, provides a sense of freedom and joy — and can even positively impact your health! When you make a genuine difference in the lives of others, you also make a difference in your own life. That virtuous circle makes us all stronger — as individuals, families and communities.

Thank you for all you have done to help our community this year through your generosity to St. Mary's. We are deeply grateful that you trusted us with your gifts.

We've filled this annual report with inspiring stories about the love and hope you created through your steadfast support and great generosity. We invite you to read them with joy and pride.

With gratitude,



Steven Jorgensen
President, St. Mary's Health System



Mark Anthoine
Board Chair, St. Mary's Health System



“If ambitions had two handles, they would be love and hope. There have never been two forces in the world more powerful than these. Much of life involves simply grabbing ahold of love and hope and never letting go.” — Bob Goff, *Dream Big*

LIVING OUR MISSION

The Marguerite d'Youville Fund: A Welcome Helping Hand for Our Employees and Neighbors

It has been a difficult year. Many people are struggling to pay rent and feed their families. Others face unexpected financial difficulties when a car breaks down or an injury keeps them out of work. Unexpected hardship affects St. Mary's employees AND patients.

At St. Mary's, we understand that financial emergencies often force people to choose which basic needs they can afford. That's why the Marguerite d'Youville Fund is one of the cornerstones of our Mission to provide healing and care for the whole person.

Named after Marguerite d'Youville, the foundress of the Sisters of Charity of Montreal — known as the “Grey Nuns” — this fund was created to support our employees and neighbors in need. Relying solely on philanthropic gifts, the fund helps the hospital's employees and patients with costly prescription co-pays, housing, clothing, transportation and minor medical equipment.

The stories below are just two examples of the people you helped this year.

Last fall, a patient who had been unhoused for several years got an apartment thanks to financial assistance for a security deposit through the Marguerite d'Youville Fund. One of our departments adopted this patient for our Hearts United in the Christmas Spirit project and delivered Christmas lights, along with other gifts, for the holiday. The patient sent in this photo and shared how much it meant to have an apartment to decorate, and expressed gratitude for the staff's generosity and thoughtfulness.



When an elderly patient was diagnosed with cancer, she had to stop working. This left her over-70-year-old husband working part time and caring for her. They barely made enough money to cover their rent and struggled to purchase food and medication. They didn't qualify for most benefits and had no family support system. A St. Mary's employee helped them apply for emergency assistance from the Marguerite d'Youville Fund.

Thanks to donors like you, we assisted with their rent, which freed up income to pay for the wife's medication and some nutritious food.

To donate to the Marguerite d'Youville Fund, visit stmarysmaine.com/give or use the enclosed envelope.

Thanks to donors like you, in 2021, we awarded over \$31,000 in grants to 93 patients and employees in need.

HEALTH CARE HEROES

Marguerite d'Youville Award Presented

Each year, St. Mary's Health System recognizes employees who exhibit Marguerite d'Youville's commitment to the spiritual renewal of society through compassionate care for the whole person. The Marguerite d'Youville Service Awards are presented to four individuals who are recognized as true models of our values: Compassion, Integrity, Collaboration and Excellence. Please join us in celebrating the following awardees.

Dr. Michael Barnes, Anesthesiologist

COMPASSION

"Understandably, some patients are anxious about having surgery. Dr. Barnes has comforted crying patients, held their hands and even played music to soothe them. He takes extra time with patients to calm them before surgery. He connects well with them, explains things clearly and simply, and interacts with them — discussing pets, travel or even poetry. He never makes patients feel rushed. He is often described as the best, most caring, thorough, attentive and compassionate anesthesiologist."

Dr. Edwin Tan, Internal Medicine

INTEGRITY

"Dr. Edwin Tan has supported thousands of patients on their journey to health by providing high quality, patient-first care. He is skilled at diagnosis and effective interventions, and he can even remember patient appointments in his head! Patients rave about how much they appreciate him. Dr. Tan often goes above and beyond for his patients but does so 'under the radar.' He does not do it for the recognition; he does it because it is the right thing to do. That is how we define the value of integrity."

Lori Dineen, Medical Affairs

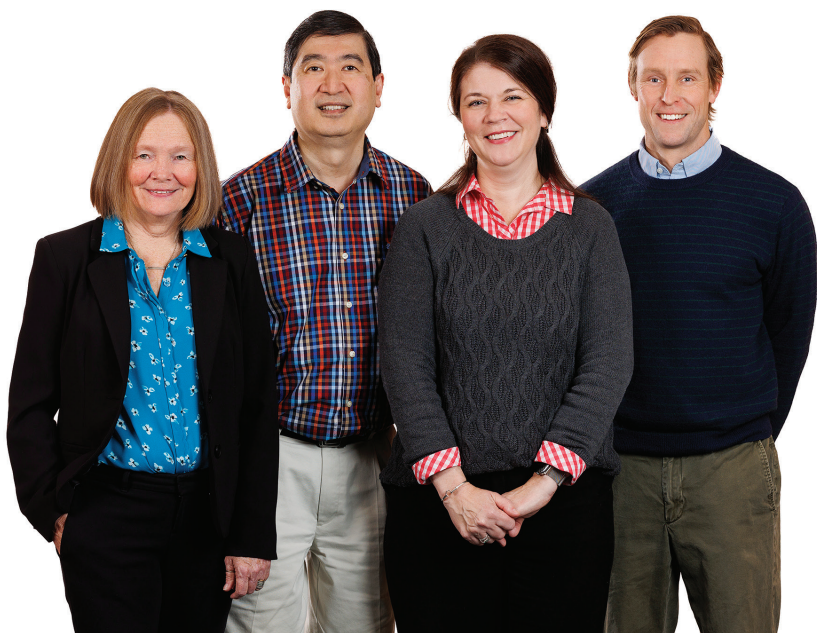
COLLABORATION

"Lori is the epitome of collaboration because of her unmatched ability to work with anyone in any department. She approaches everyone as if they are the most important person in the world. Through her warm and inviting disposition, she helps people connect to their shared purpose. She finds ways to bring people to common ground even if they start out with opposing views. Inevitably, everyone is smiling at the end of a conversation with her."

Ruth Hall, Director for Pediatric Behavioral Services

EXCELLENCE

"Through Ruth's quiet leadership and influence, she has touched many lives. She had big dreams for the renovation of the child and adolescent psychiatric unit, and those dreams have come true. That unit has the same great care and wonderful staff, but in a much-improved new space — a beautiful and calming place for kids and families to get the help they need. Ruth's vision, dedication and expertise helped make that a reality."



CAPITAL CAMPAIGN UPDATES

“Making an Impact with Care & Compassion” Campaign Completed Thanks to Donor Support

Thanks to your ongoing support, St. Mary's is ever evolving to meet the needs of our patients and staff. 2021 was the culmination of a four-year capital campaign to improve the facilities at the hospital.



Pediatric Behavioral Unit

Pediatric Behavioral Unit

Phase 1 of the campaign was completed in 2018 with the opening of the Pediatric Behavioral Unit. Now our youngest patients are receiving expert behavioral care in an exceptional environment. Thanks to the features and design of the new space, we have already seen an increase in responsiveness to treatment and shorter inpatient stays.

“Sometimes I need to get rest to feel better. I sleep so much better in this new place.”

“The colors here make me feel happier than before. I don’t feel like I’m in a hospital.”

Infusion Center

The Infusion Center opened to patients in June 2020. This new ground-level unit offers easy entry for patients who may have difficulty coming to the fourth floor of the hospital.

“Our patients love the space and often say ‘It is beautiful.’ They enjoy the private bays and the heat and massage chair features. I often hear ‘I feel like I am at a spa.’ The infusion staff is very dedicated and caring. We give patients a positive experience in difficult situations, and now our space matches that level of care.”



Infusion Center

Carlton and Lucille Sedgeley Adult Behavioral Health Unit

The new Adult Behavioral Health Unit opened to patients on December 22, 2021, completing the final phase of the campaign. “The new unit provides a more welcoming environment for our patients to heal and get the help they need,” says staff member Brandi Barden, CTRS.

“The beds are more comfortable, and I have my own bathroom. And I like having my own TV.”

“I can change in my room now because I don’t have a roommate. I like going to meet friends and hanging out with them.”

“

I feel very fortunate to work in our new Infusion Center.”

— Stephanie Buswell RN OCN



CARE & COMPASSION

Grand Opening of the Adult Behavioral Health Unit

On December 10, 2021, St. Mary's Health System celebrated the grand opening of our new Carlton and Lucille Sedgely Adult Behavioral Unit. St. Mary's is one of the only hospitals in central Maine that offers inpatient behavioral health services and the only hospital to specialize in the treatment of psychiatric illness in patients with chemical dependency. This new unit provides private rooms, increased natural light, enhanced safety features, and updated plumbing and electrical systems.

A project of this magnitude and complexity required the collaborative efforts of many people to plan, build and fund it. For example, patients were invited to participate in the design of this space. Safety was a primary consideration, with patient respect and independence also a high priority. A lead gift from Carlton and Lucille Sedgely inspired other benefactors to support this essential unit.

"The pandemic has resulted in an increase in stress for a multitude of people, not just in our local community, but throughout the state," said Board of Directors Chair and Campaign Committee Co-Chair Mark Anthoine. "This means an increase in behavioral health cases and an increased need for specialized care. The first-class care needed by so many has always been provided at St. Mary's. Now the space matches the quality of the care."

Thank you to all of you who helped design the new space, served on our building committee or made a generous donation. To take a virtual tour of the new unit, visit <https://bit.ly/BHUTour>.

Carlton and Lucille Sedgely

"We grew up in Lewiston-Auburn. While we moved away at a young age, we always felt a strong connection to the community. Giving back, especially for this cause, is critical for the well-being of everyone. Through our careers we've become close to many people who've struggled with behavioral health diseases, and we have learned how vitally important it is to have strong services in place. We also have seen how the stigma associated with behavioral health can drag someone down even further. We hope through our gift that the stigma associated with addiction and mental health issues lessens. Nobody should ever feel ashamed of having any kind of medical problem."



Carlton and Lucille Sedgely

SUPPORTING NEIGHBORS IN NEED



Commit to Get Fit Challenge Benefits Nutrition Center

Thank you to everyone who ran, walked, donated or sponsored our 8th Annual *Commit to Get Fit Challenge* on Saturday, October 16, 2021!

Together we raised over \$85,000 to benefit the St. Mary's Nutrition Center. "Building more equitable and reliable access to good food is one essential piece of the puzzle in creating conditions for people, neighborhoods, and places to thrive," notes Kirsten Walter, Director of St. Mary's Nutrition Center. "We are so grateful to everyone who participated in the *Commit to Get Fit* and supported our commitment to get good food onto more plates in Lewiston-Auburn."

Because of the support received from this event, the Nutrition Center:

- Delivered an additional 13,800 meals to neighbors who could not come to our twice-weekly food distribution.
- Provided \$20,000 in discounts to neighbors purchasing fresh fruit and vegetables at our Good Food Bus and the Lewiston Farmers' Market.
- Built a new community garden on Whitney Street in Auburn.
- Developed a new children's garden and youth "Lamppost Garden" of raised beds at the Nutrition Center.

The multifaceted challenges brought on by the pandemic have resulted in an increased demand for the use of the Nutrition Center garden and other outdoor spaces. The features of these spaces have proven to be valuable for gathering, learning and connecting at both the individual and community levels. Thanks to the support of sponsors and event participant fundraising, we are caring for the physical and social well-being of our community.

Thank you also to our amazing 2021 sponsors. For more information about supporting the Nutrition Center through 2022 sponsorship, contact Deb Anthoine at danthoine@stmarysmaine.com or 207.777.8828.



NEIGHBORHOOD GRANT

St. Mary's Nutrition Center Leads Planning Process for New Community Food Center

After two years of research, feasibility assessments and planning led by St. Mary's Nutrition Center and partner Cooperative Development Institute, the development of an innovative Community Food Center (CFC) is underway in Lewiston. The CFC will include a unique combination of a commercial kitchen, dry and cold storage, and low-cost food retail grocery. The CFC will increase access to healthy food; provide storage and processing opportunities for local small-scale food producers, entrepreneurs and farmers; provide opportunities for skills development; and unlock food retail job and business ownership opportunities for community members.

The CFC model was included in the HUD CHOICE Neighborhood Implementation Grant application submitted by the City of Lewiston and Lewiston Housing Authority in December 2020. Lewiston is the smallest city to ever to receive both a Choice Neighborhoods Planning Grant and an Implementation Grant.

The CFC is highlighted in the grant as a critical strategy to provide quality of life and vibrancy to the Tree Streets neighborhood in Lewiston.

The City of Lewiston was awarded \$30 million in May 2021 and will allocate \$1.8M of those funds to the construction of the "whitebox" space that will house the CFC, one of the largest community infrastructure budget lines in the Choice Grant. The Center will serve as the anchor tenant of a 70-unit, mixed-use development on Pine Street along Kennedy Park, developed by Avesta Housing and owned by the Lewiston Housing Authority.

As always, the Nutrition Center and its partners are doing all they can to ensure a fully community-driven process. The CFC lead team has already held multiple community engagement sessions to



identify participants for diverse and well-represented Steering and Advisory Committees to drive a community-led development process. A partnership with an MIT master's architect program has provided innovative design ideas. In addition to the money allocated by the Choice Grant, additional financing and funding are being secured for working capital and tenant improvements.

We are looking forward to moving from a visioning and feasibility assessment to a robust community-led development process as we support the creation of this exciting multi-stakeholder cooperative business that will bring energy and vitality to downtown Lewiston.



PROVIDING THE BEST PATIENT CARE

You're So Cool! Donors Step Forward To Fund Air Conditioning Project at d'Youville Pavilion

St. Mary's d'Youville Pavilion offers a state-of-the-art rehab center, specialized memory care unit, skilled and long-term nursing care and more. We offer patients and residents from many different backgrounds and faiths the respect, dignity, and sense of purpose they need and deserve in a genuinely compassionate and empathetic environment.

The building, constructed in the 1970s, has an antiquated air conditioning system that cools only some hallways. Installing central air conditioning in an existing building is a large undertaking, but it's also a priority to ensure our community's health and well-being — especially our residents who rely on lifesaving machines that generate even more heat.

Thanks to your support, we raised \$16,000 toward this important project during our Fall 2021 Appeal. In a note that accompanied their gift, donors Carmen and Sam Evrard wrote, "When we heard about your initiative to bring air conditioning to d'Youville Pavilion, it struck a chord with us. We feel passionate about those who reside at d'Youville Pavilion and wanted to help ensure they were as comfortable and safe as possible. In addition, as Carmen is a 34-year laboratory health care professional, we are well aware of the stresses that hot days can put on staff. The improved climate control system will go a long way in helping them deliver great, quality, compassionate care to the residents of d'Youville."



In addition to the money raised by our community, the Sisters of Charity pledged to cover a significant portion of the project cost. The new unit will be installed in the fall of 2022. Thank you to everyone who supported this important initiative!

To contribute to this necessary project, visit stmarysmaine.com/give or contact Deb Anthoine at danthoine@stmarysmaine.com or 207.777.8828.

“When we heard about your initiative to bring air conditioning to d'Youville Pavilion, it struck a chord with us.”

MAINE HEALTH PARTNERSHIP

Making Specialty Care Even Stronger

In September 2021, St. Mary's Health System and MaineHealth announced the expansion of their longstanding clinical affiliation to provide an enhanced array of high-quality specialty care services in the Lewiston-Auburn community. Patients are now able to access general surgery and breast cancer care from MaineHealth providers on the St. Mary's campus.

“Our community faces some critical health challenges that we are working to address through our expanded affiliation and long-term investments in community health,” said St. Mary's president Steve Jorgensen.

“In addition to increased poverty and uninsured rates, we see a higher prevalence of some serious health conditions in Androscoggin County, including cardiac and pulmonary health issues caused by numerous preventable and unpreventable factors.”

By offering these specialty services locally, St. Mary's is reducing the burden on patients who would otherwise have to travel far beyond the Lewiston-Auburn area for care. These expanded specialty services also help improve the health of the community and make it more attractive to businesses that may be looking to expand or relocate here.

Over the past 132 years, St. Mary's has evolved to meet the Lewiston-Auburn community's unique health care needs, growing from a single hospital to a fully integrated health system with numerous primary care and specialty physician practices. This expanded clinical affiliation with MaineHealth continues its steadfast commitment to meet the needs of our community.



PLANNED GIVING DONOR SPOTLIGHTS

Thoughtful Donors Support St. Mary's with Final Gifts



Cynthia Crocker, a long-time owner of Seltzer and Rydholm known for her generosity in Central Maine, passed away on August 3, 2021, at the age of 95. While in her 20s, Cynthia participated in the US Navy Cadet Nurse program and completed nursing school at Eastern Maine General Hospital in 1948. She believed in her community and supported many local organizations, including healthcare. She generously contributed to many improvements at St. Mary's during her lifetime, including upgrades to the OBGYN and Emergency Departments. St. Mary's is deeply grateful to Cynthia for her generosity during her life and for continuing her legacy of kindness through an IRA distribution at her passing. St. Mary's received \$533,918 from her estate to support the costs of the many medical programs offered and the staff who care for our patients.



In 1986, David Merson had a near fatal aneurysm while biking. A Lewiston High School history teacher saw him on the side of the road and immediately began to assist. A member of Lewiston-Auburn's small but vibrant Jewish community, David asked to be taken to CMMC. But recognizing the urgent medical situation, the good Samaritan teacher insisted they go to St. Mary's, which was closer, for lifesaving care. As the family story goes, a couple of days later, Gary, David's son, then an early teenager, went to visit him against his mother's wishes. Upon seeing his father in the ICU, Gary promptly fainted. Thankfully, the St. Mary's nurses and doctors were there to provide care to him as well! David and the Merson family were always grateful to the St. Mary's medical team. David and Joyce Merson set aside a portion of their savings for charitable contributions to be made after their deaths. We recently received a gift of \$13,000 from the Merson estate in honor of our staff.

Cynthia Crocker and David and Joyce Merson carefully planned a way to support St. Mary's with a final gift and hoped it also would inspire other gifts and support for the hospital they loved. Legacy gifts enable St. Mary's to pursue excellence as it fulfills its Mission of compassionate care.

To learn more about planned giving opportunities, please contact Deb Anthoine at danthoine@stmarysmaine.com or 207.777.8828



THE LEGACY SOCIETY

Donors for Tomorrow

The St. Mary's *Legacy Society* recognizes those who have made a commitment to the future of St. Mary's Health System through a planned gift — the intentional sharing of money, property or other assets one accumulates over a lifetime. The list below includes those individuals who have shared their planned gift intention. The most popular method of planned giving is to include St. Mary's Health System in your will. Other ways of giving include real estate, charitable gift annuities and life insurance. To learn more about the St. Mary's *Legacy Society* or to share your planned gift intentions, please call us at 207.777.8863.

Mark and Debra Anthoine	Robert Despres*	Regis and Carolyn Lepage
Mildred Bickford*	René and Julia Dumont	Merson Remainder
Frederick and Janet Bishop	Cecile M. Fortini*	Charitable Trust
James and Rita Cassidy	Peter E. Geiger	Diane Marquis Monaghan
Rev. Elizabeth M. Coffey and	Chloe Giampaolo	Lee and Linda Myles
J. Bradford Coffey	Darren and Lena-Jo Hartley	Rene Ouellette*
Stephen and Mary Ellen Costello	Helen S. Hammond Family Trust	Terry Samson
Cecile J. Coulombe*	Christine Lachance	Marguerite Stapleton and
Cynthia Crocker*	Albert Lepage	Trina Suydam

The fundamental components of a true legacy include living a life consistent with our values; living in harmony with others; and living in a way that preserves the things essential to a healthy, sustainable, and productive community. Ideally, we want to leave the world better than we found it. Generous and thoughtful philanthropy is the avenue that helps us create and solidify our legacies. The first step in creating a legacy is finding an area in which to make a difference. What are your passions?

“*The true meaning of life is to plant trees under whose shade you do not expect to sit.*”
— *Farmer Nelson Henderson*

CUMULATIVE LIFETIME GIVING DONORS

Lifetime Giving – Philanthropic Partners

St. Mary's gratefully acknowledges the following individuals for their cumulative lifetime commitment of \$10,000 or more toward the mission and programs in service to providing health care to everyone in our community.

CIRCLE OF SAINTS

\$1,000,000+

Paul Coulombe
Albert Lepage
Carlton and Lucille Sedgeley
The Society of the
Sisters of Charity

FOUNDERS SOCIETY

\$500,000-\$999,999

Albert Lepage Foundation Inc.
Avon Foundation
Elmina B. Sewall Foundation
Harvard Pilgrim Health
Care Foundation
The Kresge Foundation

VISIONARIES

\$250,000-\$499,999

Andrew P. Barowsky
Charitable Foundation
City of Lewiston
Cecile Coulombe*
Davis Family Foundation
Robert Despres*
Dolard and Priscilla* Gendron
Maine Community Foundation
Maine Health Access Foundation
Synernet Workers'
Compensation Trust
USDA - National Institute of
Food and Agriculture
WalMart Foundation

CHAMPIONS

\$100,000-\$249,999

Mark and Debra Anthoine
Bank of America
Bank of America
Charitable Foundation
Frederick and Janet Bishop
James and Rita Cassidy
Peter* and Marjorie S. Clifford
Roland* and Patricia Coulombe
Dennis and Amanda Coulombe
Covenant Health
Cynthia Crocker*
Peter E. Geiger
Health Resources and
Services Administration
Hearst Family Foundation
John T. Gorman Foundation
Lee Auto Malls
Regis and Carolyn Lepage
MaineHealth
Merck Family Fund
Roger and Penny Michaud
Norman, Hanson & DeTroy
Northern Maine
Development Commission
Pepsico
Thomas and Paula Platz
Terry. and Gerard* Samson
Spectrum Healthcare Partners
St. Mary's Volunteers
Stephen and
Tabitha King Foundation
Estate of Dr. Camille Tousignant*
United Way of
Androscoggin County
University of New England

HUMANITARIANS

\$50,000-\$99,999

Androscoggin Bank
Bangor Savings Bank Foundation
Andrew Barowsky
BGA Financial
Christensen Family Foundation
Cultivating Community
Doree Taylor Charitable Foundation
René and Julia Dumont
Empower Lewiston
Cecile Fortini*
Geiger
Dr. and Mrs. Ralph V. Harder
Healey & Associates
Healthy Androscoggin
Hebert Construction, LLC
John and Linda Isaacson
Steven and Martha Jorgensen
Stephen and Carolyn Kasabian
M.Ed Kelley, MD and Dani Kelley
Maine Behavioral
Health Partnership
Maine Cancer Foundation
Maine Community Bank
Maine Emergency
Management Agency
Maine Federation of
Farmers' Markets
Maine Primary Care Association
Lee and Linda Myles
Rene Ouellette*
Quimby Family Foundation
R. A. Limited
SMRT, Inc.
St. Mary's Anesthesia Associates
St. Mary's Auxiliary
State of Maine
United Ambulance Service
White Rock Distilleries



AMBASSADORS

\$25,000-\$49,999

Administration for Children
and Families

Aetna Foundation

Dr. and Mrs. Bahman Ayubi, MD

Baker Newman Noyes

Susan I. Belanger

Black Bear Hydro Partners, LLC

Dr. and Mrs. Douglas P. Boyink

Christopher and Stephanie Bowe

Budget Document Technology

Margaret E. Burnham

Charitable Trust

Bursaw Gas & Oil, Inc.

Central Distributors, Inc.

Central Maine Eye Care, PA LLC

Central Maine Orthopaedics

Stephen and Mary Ellen Costello

Dean L. Fisher

Charitable Foundation

DeBlois Electric, Inc.

Emergency Food and

Shelter Program

Emerson Chevrolet

Emerson Toyota

Frances Hollis Brain Foundation

Ann Geiger*

Good Shepherd Food Bank

Hannaford Food and Drug

Haymarket People's Fund

Helen and George Ladd

Charitable Corporation

Philip and Albert Hickey-L'Etoile

Hudson Bus Lines

Edmund and Susan Keiler

Key Bank

Liberty Mutual Insurance Group

Maple Way Dental Care

Metz Culinary Management

Wayne and Lauren Moody

Margaret Murphy* Trust

Onion Foundation

Jean L. Payne*

Peoples Group

Pine Tree Legal Assistance

James and Cindy Place

Platz Associates

Gregory and Virginia Pomeroy

Prince of Peace Parish

Keith and Joan Marie Quattrocchi

Rinck Advertising

Ira Shapiro and Barbara Carlin

Douglas Smith and

Mary Beth Taylor

St. Mary's Medical Affairs

Lionel Tardif*, MD and

Claire Tardif*

Dr. and Mrs. Robert P. Tardif

The Bennett Family Foundation

The Bingham Program

The Hudson Foundation

Jon and Liza Thompson

Dawn and Todd Tritch

Edward Z. Walworth, MD

and Candace Walworth, MD*

Western Maine Community Action

Western Mountains Alliance

Wholesome Wave Foundation

THE CAMPAIGN FOR ST. MARY'S

Innovators of the Best Patient Care

Community support built St. Mary's Health System. The Campaign for St. Mary's is building on that legacy to broaden our services, improve patient care and strengthen mission impact in the community we call home. In December 2021, patients were welcomed to the new Carlton and Lucille Sedgely Adult Behavioral Health Unit.

CIRCLE OF SAINTS

\$1,000,000+

Albert Lepage Foundation, Inc.
Carlton and Lucille Sedgely
The Society of the Sisters
of Charity

FOUNDERS SOCIETY

\$500,000-\$999,999

Mark and Debra Anthoine
Regis and Carolyn Lepage

VISIONARIES

\$250,000-\$499,999

Andrew P. Barowsky Charitable
Foundation
James and Rita Cassidy
Dolard Gendron

CHAMPIONS

\$100,000-\$249,999

Frederick and Janet Bishop
Peter* and Marjorie Clifford
Stephen and Mary Ellen Costello
Davis Family Foundation
Hearst Family Foundation
John and Linda Isaacson
Roger and Penny Michaud
Thomas and Paula Platz
Theresa S. Samson
Spectrum Healthcare Partners

HUMANITARIANS

\$50,000-\$99,999

Bangor Savings Bank Foundation
Rev. Elizabeth M. Coffey and J.
Bradford Coffey
René and Julia Dumont
Peter E. Geiger
Hebert Construction, LLC
Steven and Martha Jorgensen
M.Ed Kelly, MD and Dani Kelley

AMBASSADORS

\$25,000-\$49,999

Stephen and Carolyn Kasabian
Stephen & Tabitha King
Foundation
Maine Community Bank
Gregory and Virginia Pomeroy
Douglas G. Smith

BENEFACTORS

\$10,000-\$24,999

Alberding Family Foundation
Androscoggin Bank
Susan Belanger
Christopher and Stephanie Bowe
Champoux Insurance Group
Doug and Karen Clark
Consigli Construction Co., Inc.
Jeffrey Davila
Conrad Davis II
John and Beth Emerson
Stephen and Susanne Gallagher
John and Susan Geismar
Ruth and Cy Hall
Ralph and Melinda Harder
Darren and Lena-Jo Hartley
Philip and Albert Hickey-L'Etoile
Lane and Joy Kaplan
Francis Cuff and Elizabeth Keene
Jack P. Keith and Richard Dawes
David and Susan Lincoln

Raymond and Rhonda Martel
Derek and Andrea Mittleider
Michael and Anne Newman
John Orestis and Barbra Crowley
James and Cindy Place
Paul and Celeste Rouleau
Jon and Liza Thompson

PARTNERS

\$5,000-\$9,999

Agren Appliance
Raymond and Pamela Beaulé
James and Cindy Brousseau
Jeffrey and Susan Brown
Margaret E. Burnham Charitable
Trust
Christopher and Jennifer
Chekouras
Robert T. Crone
Paige and Susan Hagerstrom
Melanie and Gary Hatfield
Kevin and Alisan Kavookjian
Elizabeth R. Linnell-Oken
Maureen E. Perdue
Lars and Andrea Qvick
Michael and Debra Rancourt
John and Anne Schuettinger
Steve and Evie Taylor
James and Denise Timberlake
Gary C. Williams

CHAIRMAN'S SOCIETY

\$2,500-\$4,999

Anonymous (2)
Barbara L. Childs
FirstLight
Donald and Sharon Fournier
Benjamin and Erin Hayes
Linda Henderson
Jill Hurd
Na Liu
Jeffrey and Leisha Michaud

Leo and Linda Myles
Jerry Scribner and
Nicole Morin-Scribner
Heather Skolfield
Jeffrey and Kim Thistlewaite
Kirsten Walter and
Jeffrey Eckhouse

PRESIDENT'S COUNCIL

\$1,000-\$2,499

Anonymous (2)
Mirela Andrei
Marty and Judy Andrucki
Milton Ayer
Glen and Clara Bolduc
Joan Churchill
Jenny and Scott Cowie
Todd and Nancy Gatchell
Gregory and Dawn Gilbert
Dean P. Hanson
John and Beverly Haynes
Michael and Karen Hendrix
Thomas and Diane Henson
Jeffrey Hundman
John and Liz Lewandowski
Tina W. Lin-Mott
Deana Macomber
Jenifer and Marc Madore
Diane Marquis Monaghan and
John Monaghan
Donna M. Martinez
Jennifer L. Mogul
Dale and Betty Morrell
Ovation Fundraising Counsel
Deb and Lenny Perkins
Jason and Angie Rosenberg
Patricia Scherle
Carol M. Sirois
Audrey Thomson Lynch
Jonathan and Joan Torres
The Doug and Martha Waite
Donor Advised Fund

THE CAMPAIGN FOR ST. MARY'S, CONTINUED

SAMARITANS

\$500-\$999

Anonymous (3)
Richard and Linda Bilodeau
Paul and Wendy Blais
Kathleen Boucher
Richard and Anne Brown
Stephanie Buswell
Matthew Carroll
Louise Champoux
John and Joanne Chapman
Carol A. Garant
Paul Gauvreau* and
Evelyn Greenlaw
Celine Gibbings
Bruce and Dorothy Guild
Craig and Carolyn Gunderson
Richard and Barbara Kappelmann
Kathleen McManus
Laurier Morin
Matthew and Dr. Catherine
O'Connor-de Jongh
Thomas and Audrey Ouellette
Vicki L. Owens
Paul and Sonomi Ranucci
Diane Robarge
Andrea Schademan
Alison Smith
Lorri L. Soule
Marissa Varney

PATRONS

\$250-\$499

Anonymous (4)
Mark Allen
Sarah Alto
Robert and Therese Boies
Danielle M. Booth
Deborah M. Burd
Diana Burnell
Lynn Carlow
April Casella
Melissa Chappell
Barbara and Dennis Chute
Shannon Cloutier

Robert F. Cole
Jessica Dagneau
Rebecca Dugan
Lori Dyer
Nancy F. Edwards
Joelle P. Gagnon
Judi Gagnon
Robert Gagnon and
Kari Grant-Gagnon
Craig Hallock
Vickie Hartford
Justin and Maija Harvey
Stacey Henson-Drake
Kristen L. Hirsh
Karen Hobson
Daniel and Lori Jacques
Rebecca Jordan
Donna Knightly
Julie Marcotte
Sandra Masters
Fawn Mercer
Daniel Mingle
Ellen R. Pogson
Paul and Sharron Raczyński
Robin N. Richard
Anita Rousseau
John and Jessica St. Cyr
Richard and Diane St. Laurent
Lori Tame
Everett W. Tilton
Caitlin Walton

FRIENDS

\$100-\$249

Anonymous (14)
Elizabeth Audet
Bridgette Bartlett
Pauline Beach
Paul and Sally Belisle
Patricia Bell
Michelle L. Bishop
Lisa Bisson
Jennifer L. Bragdon
Gina Breton
Michele Brewer
Melissa M. Brisson

Doreen Brochu
Natalie Brooks
Michelle L. Buckman
Sarah Burek
Courtney M. Burnham
Roger and Debra Caron
Debra Charest
Crystal Conant
Amy Cronkhite
David Deluca
Veronica L. Diamond, FNP
Marion Doyle
Cathy Dunn
Jillian Duplissis
Mary E. Floyd
Rev. Sarah Gillespie
Angela Goodwin
Ashley Goodwin
Keith and Melanie Greateon
Lori Hallett
Candice Hammerton
Tina A. Harvey
Johnwayne D. Holm
Kelly J. Hooper
Michael and Frances Horton
James P. Hulin
Denis and Lucille Jean
Harley M. Kerr
Donald and Michele Kirouac
Michael and Amy Knowlton
Elaine Landry
Rachel Lavoie
Terry Lebrun
Kristi S. Leidemann
Kristie N. Leighton
Shannon Lessard
Melinda Lovering
Teresita L. Maguire
Hunter and Chloe Martin
Crystal M. McIntyre
Corrie Minchin
Novria I. Nour
Rick and Donna Paradis
Kasey Pelletier
Sheena Perreault
Sr. Irene Platt

Colin S. Pope and Kathleen
Abernathy
Thomas and Cynthia Powell
Doreen Rancourt
Rochelle A. Rawding
Roquiza Reboquo
Richard and Therese Rodrigue
Nicole Roy
Mark Shaughnessy
Michael and Diane Smith
Thorold G. Smith, III
Jamie Strachan
Denis and Lena Theriault
Thomas and Bonnie Thibault
Jessica L. Todd-Brown, FNP
Douglas and Monique Weber
Laura H. Welch
Alana Wurtz

TRIBUTE GIFTS

Remembering Those You Love and Care About

A gift made in honor or memory of someone is a wonderful way to recognize friends, loved ones or a St. Mary's provider who demonstrated compassion and caring. These tribute gifts were received between January 1, 2021, and December 31, 2021.

IN HONOR OF

All those who go before us
Roger Greene

Mina Assadollahzadeh, DO
Ronald M. Hennigar

Rolande M. Beaulé
Raymond and Pamela Beaulé

Kenneth Brodsky, DO
Wesley A. Sawyer
Alan A. Wilson

Anne J. Brown, MD
Michael and Joan Brochu

Jeffrey L. Brown, MD
Marguerite and Paul Goulet
Linda Henderson
Donald and Irene Labranche
Laurier and Christine Lachance
Clifford McNeil
Constance Mower
Philip Mower
Terry Samson

Louise A. Champoux
Champoux Insurance Group

Harry Childs
Steven and Martha Jorgensen

Jenny W. Cowie
Roland Metayer and Claire Breton

Jane F. DeAngelis, RN
Paul* and Sally Belisle

Scott J. Deron
Alana Watkins

Celia J. Doucette
Roland Metayer and Claire Breton

Paul Drowns
Linda A. Tracy

Judy A. Francoise
Peggy and Bob Pennabere

Baby Fyfe
Craig and Julie Saddlemire

Gisele Gagnon
Jenny Lovering

Gary R. Hatfield, MD
Peggy and Bob Pennabere

Gary R. Hatfield, MD and Staff
Fr. Ray Morency

Maria G. Ikossi, MD
Nancy A. Raboin

Lori Jacques, RN
Gary and Martha Bell

Dashiell Jordan, MD
Doris M. Meservier
Cecile Paradis

Barbara Kappelmann, RN
Paul* and Sally Belisle
Robert and Clementina Clifford

Richard K. Kappelmann, MD
Paul* and Sally Belisle
Gary and Martha Bell
John Clark
Robert and Clementina Clifford
Michelle Couillard

Donald and Irene LaBranche
Raymond and Catherine Richard

Françoise O. Lepage
Regis and Carolyn Lepage

Albert R. Lepage
Regis and Carolyn Lepage

Carolyn A. Lepage
Carlton and Lucille Sedgeley

Regis F. Lepage
Carlton and Lucille Sedgeley

Na Liu, MD
Nancy A. Raboin

Denise Lucy
Regis and Carolyn Lepage

Kate E. Lydon, RN
Erica Richards

Robert McArdle, DO
Terry Samson

Matthew A. Mechtenberg, MD
Nancy A. Raboin

Albert W. Milasauskis
Cecile Paradis

Claire Mottram
Sylvia Heath

Douglas W. Nam, MD
Hugh and Grace Keene

James P. Parker, MD
Cecile Paradis

Carl D. Robinson, MD
Jan L. Barker

Theresa S. Samson
Ronald M. Hood (2)

Amanda Scott, MD
Ruth Trites

Carlton and Lucille Sedgeley
Regis and Carolyn Lepage
Marlene Miller (3)
Stephen N. Sedgeley

Joseph E. Strauss, DO
Susan Clayton

Edwin Tan, MD
Roland Metayer and Claire Breton

Marissa Tardif, NP
Mark Silber

Those with special needs
John and Beverly Haynes

Diana Trofimivitch, MD
Susan Clayton

Roy Ulin, MD
Cecile Paradis

Janet P. Viere
Marc A. Nadeau

Margaret Ward
Larry and Carolyn Jacobs

Andie L. Wishman
Wesley A. Sawyer

IN MEMORY OF

Earl and Althea Austin
Stephen Austin

Juliette Bannister
Pauline L. Cashman
Ron and Claire Gagnon
Helen A Thompson School
Robert and Lorraine Kitchen
Anita Jean
Denis & Kathy Landry,
Monique Cote, Claude and Gloria
Landry, Rene and Louise Landry,
Richard and Louise Robert

Norman J. Beuparlant
Steven and Martha Jorgensen

Vincent H. Beeaker, MD & Geraldine Beeaker
David and Alison Ginsberg

Bertrand Beliveau, MD
Paul and Debbra Beauchesne
Dr. Thomas and Bethel Shields

Paul and Mary Bourque
Sr. Anne-Marie Bourque, RSM

Marvin W. Campbell
The Family of Marvin W. Campbell

Annabella G. Cavallero
Mary Cavallero

Jane Chin
Roger A. Boivin
Diane Bush
Butler Bros Inc.
Alice Chin
Debora Chin
Dennis G. Chin (2)
Nancy Chin
Helen A Thompson School
Howard Ngai
Scarborough Fish & Game,
Trap Committee

Wilfrid A. Cloutier, MD
James and Paulette Carville
Dr. Thomas and Bethel Shields

Ronald Comisky
Brenda Hamlin

Casey Conlin C. Cooper
Alysia Coats

Janice C. Costello
Peter Geiger
Lenny and Deb Perkins

Lionel and Christine Cote
Richard and Elaine Dubois

Jack and Levi Cusson
Butler Bros Inc.

Muriel Y. Davis
Conrad P. Davis, II and Family

Mary H. Elwell
Donald and Arlene Davis
Donald and Rosemary Malpass

Cecile M. Fortini
Ronald M. Hood

Adolph "Sonny" Gagnon
Jennifer Saupp

Norman O. Gauvreau, MD
Dr. Thomas and Bethel Shields

Donna Gibbs
Chris and Del Conant

Robert R. Gladu
Ginette Gladu

Shirley Goodman
Joel Goodman

Cecile Guay
Scarborough Fish & Game,
Trap Committee

TRIBUTE GIFTS, CONTINUED

Alma Hammond

Herbert Hammond (2)
Janet G. Spencer

Oliver Hillier

Christina Howard
Richard and Rita Howard

Oliver Hillier & Ivy Hiller

Dr. Debora and Trent Murphy,
Abigail, and David

Kya M. Houghton

Patrick and Katie Houghton

Dana G. Jones

Kathie Thomas

Arvilla A. Kay

Denis C. Marcotte

Edward McKenzie

Kevin and Linda Gordius

John T. Konecki, MD

Dr. Thomas and Bethel Shields

Paul J. Laflamme, MD

Dr. Thomas and Bethel Shields

Luca P. Laliberte

Jamie Cormier

Colby C. Langlois

Marden's, Inc

Joanne B. Langlois

Champoux Insurance Group
Daniel and Celeste Horan
Andre and Cecile Langlois
Gilles Langlois
Karen Westcott, Gary and Krista
Chamberland, Robyn and Jacob
Cole, Roger and Lynda Young

Joanne B. Langlois

Ross Wyman and Priscilla
Campbell-Wyman

Mr & Mrs Joseph Latulippe

Theresa Latulippe

Eugene F. Linehan

Ruth Linehan (2)

Juliette Madore

Linda and Gilles Cote

Dara Maguire

Ronald and Cynthia Bartlett
Geraldine Bryant
The Curriers and The Kashians
Carol A. Davis
Thomas and Sara Dean
Nancy N. Gordon
Mary K. Paradis
Ken and Terry Sawyer

Madeleine Marcotte

Michelle A. Hanley

Lucille A. Martineau

Evelyn Plourde

John J. McKenna

Kathy Pross (3)

Gerard L. Morin, MD

Dr. Thomas and Bethel Shields

Lawrence A. Nadeau, MD

Dr. Thomas and Bethel Shields

Beverly A. Olmstead

Bridgeport Fire Fighters Local 834
John and Lesley Kostyszyn
Mary E. McNiff

Gabriel Olmstead

Elizabeth A. Petrocelli

Sr. Irene Platt

Fred and Janet Bishop

Edwin "Ted" Quigley

Rob and Valerie Cort

Paul E. Raczynski

Ruth Linehan

Yvette J. Rodrigue

Marcel and Claudette Rodrigue

Emily-Anne O. Ross

Amber Ross

G.P. Raynald Roy, MD

Dr. Thomas and Bethel Shields

Gerard A. Samson

Terry Samson

Judy Sawyer

Wesley A. Sawyer

James Shearer

David and Wandah Clark

Lt. J.G. James B. Shields, USN

Dr. Thomas and Bethel Shields (2)

Lori A. Skelton

Deborah Higgins

Gunner Smith

Pauline Fournier

Albert Sylvain

Bert Sylvain

Karen M. Tibbetts

Deborah Higgins

Rylee M. Travers

Evan, Alicia and Damon Travers

Robert D. Wakefield, MD

Dr. Thomas and Bethel Shields

Frederick "Rick" C. Walter

Donna S. Walter

Candace Walworth

Dr. Edward Z. Walworth

Sandra M. Wilson

Alan A. Wilson (2)

*"Those we love don't go away,
They walk beside us every day,
unseen, unheard, but always near,
Still loved, still missed and
very dear."*



Dara Maguire, Behavioral Health LCPC,
(1958 – 2021)

ANNUAL DONORS

Believers in Compassionate Care

Your gifts support the delivery of high-quality, compassionate health care and mission services to St. Mary's patients and community. We recognize annual fund gifts of \$100 or more made between January 1, 2021, and December 31, 2021.

VISIONARIES

\$250,000-\$499,999

Albert Lepage Foundation, Inc.

CHAMPIONS

\$100,000-\$249,999

USDA - National Institute of Food and Agriculture

HUMANITARIANS

\$50,000-\$99,999

Harvard Pilgrim Health Care Foundation
Health Resources and Services Administration
Maine Emergency Management Agency

AMBASSADORS

\$25,000-\$49,999

Good Shepherd Food Bank
Maine Federation of Farmers' Markets
Quimby Family Foundation

BENEFACTORS

\$10,000-\$24,999

Anonymous (1)
Budget Document Technology Δ
Marjorie S. Clifford Δ
Gillis Dionne*
Emergency Food and Shelter Program
Evergreen Subaru
Onion Foundation
Spectrum Healthcare Partners
The Hudson Foundation

PARTNERS

\$5,000-\$9,999

Biddeford and Mechanics Savings Charitable Foundation
Frederick and Janet Bishop Δ
Central Maine Power Company
Davis Landscape Company Inc.
DeBlois Electric, Inc.
Ensemble Health Partners
Sam and Carmen Evrard Δ
Frances Hollis Brain Foundation
Maple Way Dental Care
Metz Culinary Management Δ
Thomas F. Staley Foundation
United Way of Androscoggin County Δ

CHAIRMAN'S SOCIETY

\$2,500-\$4,999

Anonymous (1)
Aetna Foundation
Alberding Family Foundation
Androscoggin Home Care and Hospice
Butler Bros Inc.
Coutts Brothers, Inc.
Michael and Madonna DeVaudreuil Δ
Emerson Chevrolet
Fiducient Advisors
William and Margaret Johnson
Lee Auto Malls Δ
Regis and Carolyn Lepage Δ
Maine Farmland Trust
Nason Mechanical Systems Δ
Norman, Hanson and DeTroy
Northern New England Clinical Oncology Society
Precision Builders
Theresa Samson Δ
Carlton and Lucille Sedgeley Δ
The Bennett Family Foundation
Toyota Dealer Match Program

PRESIDENT'S COUNCIL

\$1,000-\$2,499

Michael R. Barnes
Anne and Richard Brown Δ
James and Rita Cassidy Δ
Pauline C. Chaloux
Champoux Insurance Group Δ
City of Auburn
Francis Cuff and Elizabeth Keene Δ
Alison Daigle, DO
Conrad P. Davis, II and Family
Charles A. Demm
Dirigo Federal Credit Union Δ
Grace Community Church Δ
Herbert S. Hammond
Melanie and Gary Hatfield Δ
Humana
Steven and Martha Jorgensen
David Ledlie Δ
Liberty Mutual Insurance Charitable Gift Fund
Kate Lydon
Maine Community Bank Δ
Marden's, Inc
Rooper's Beverage and Redemption Center
St. Mary's Medical Affairs
Transamerica Retirement Solutions
Walmart DC 7014

SAMARITANS

\$500-\$999

Anonymous (6)
Stephen Austin
Austin Associates, PA Δ
Joan Bonneau
John and Doris Bonneau
Thomas and Deirdre Boro
Kathleen M. Boucher
James and Cindy Brousseau
Jeffrey and Susan M. Brown
Matthew Carroll
Jacqueline N. Castonguay
Debra P. Charest
Ronald Chicoine
Barbara L. Childs
City of Lewiston
William D. Collins
Jenny and Scott Cowie
John W. Davis, Jr. and Suzanne M. Davis
Jackie Eckhouse Δ
Alice R. Faucher Δ
Paul Giguere
Ashley E. Goodwin and Family
Melinda and Ralph Harder Δ
Julia Harper and Craig Saddlemire
Harvard Pilgrim Healthcare of New England
Katie Houghton
Angela M. Imhof
Richard and Barbara Kappelmann
Susan Kelley
Lucille Lacombe-Campaniello Δ
Brian and Jenna Langlais
Gilles Langlois
John and Elizabeth Lewandowski Δ

Elizabeth Linnell-Oken
 Maine Credit Union League Δ
 Julie A. Marcotte
 Kathleen M. McManus Δ
 Marlene Miller Δ
 Emil P. Miskovsky, MD
 Patricia L. Moore
 Dale and Betty Morrell
 Joseph O'Connor and
 Jennifer Sullivan Δ
 Steven J. and
 Jacqueline M. Ouellette Δ
 Tom and Audrey Ouellette
 Robinson Family Human
 and Animal Fund
 Simard and Sons, Inc.
 Carol Sirois
 Janet G. Spencer Δ
 The Snowman Group
 Tree Line Cannabis
 Company, LLC Δ

PATRONS

\$250-\$999

Anonymous (6)
 Mark Allen
 Sarah Alto
 Debra and Mark Anthoine
 Bates College Jewish
 Student Union
 The Blackbaud Giving Fund
 Jessie Boda
 Bertha A. Bodenheimer
 Jeffrey Chandler
 Carol Clark Δ
 Robert and Clementina Clifford Δ
 Lizette Deschenes
 David and Nancy Dubord

Timothy E. Dutton
 Elizabeth Ellis Δ
 Jane K. Frizzell
 Graybar Foundation
 Peter and Judy Holden
 Lori Jacques
 Lee and Ingrid Kendall Δ
 Brenda Laplante Δ
 Theresa Latulippe
 Richard and Joan Legendre Δ
 Benjamin and Bonnie Lounsbury
 Melinda Lovering
 Doris M. Meservier
 MMG Insurance Company
 Dr. Debora and Trent Murphy,
 Abigail and David
 William J. Nash
 MT Newman Δ
 Camille and Kirk Parrish Δ
 John and Amy Poulin
 Patricia and Alfred Scherle
 Thomas and Bethel Shields
 Jamie Strachan
 Dr. and Mrs. Jonathan K. Torres
 Donna S. Walter
 Anne Williams Δ
 John Wilson
 Ross Wyman and
 Priscilla Campbell-Wyman

FRIENDS

\$100-\$249

Anonymous (11)
 A Daily Reprieve
 Allen Manufacturing
 The Baha'i Community of Lewiston
 Kendra Bailey
 Sarah Bailey

Paul and Debbra Beauchesne
 Raymond and Pamela Beaulé
 Susan Belanger Δ
 Paul* and Sally Belisle Δ
 Gary and Martha Bell
 Dennis and Nadine Bellmore
 Robert and Therese Boies
 Taylor Bolden
 Bridgeport Fire Fighters Local 834
 Michael and Joan Brochu
 Sarah Burek
 The Family of Marvin W. Campbell
 Roger and Debra Caron
 Louise A. Champoux
 Alice Chin
 Dennis G. Chin
 Nancy Chin
 Andrew and Karen Choate
 Robert F. Cole
 Chris and Del Conant Δ
 Rob and Valerie Cort
 Linda G. Cote
 Teresa M. Dean
 Thomas and Sara Dean
 Normand and Laurette Demers
 Robert and Darlene Denis
 Louis Di Salvo
 Marion Doyle
 Richard and Elaine Dubois
 Fedco Seeds Inc.
 Pauline Fournier
 Judi Gagnon
 Norman Gagnon and
 Judith Rousseau-Gagnon
 David C. Geiger
 Peter E. Geiger
 Deborah Gilbert Δ
 Laurent and Patricia Gilbert Δ

David and Alison Ginsberg Δ
 Kevin and Linda Gordius
 Grace Lutheran Church Δ
 Roger Greene
 Stuart and Nancy Greene
 Steve and Cissy Grubbs
 Frederick and Charlene Hall
 Vickie Hartford
 Jennifer Hartshorn
 Sylvia Heath
 Linda Henderson
 Deborah Higgins
 Ronald M. Hood Δ
 Richard and Rita Howard
 Rae Hughes
 Larry and Carolyn Jacobs
 Carrie A. Jadud
 Tracy G. Jellison
 Matt Jones
 Hugh and Grace Keene Δ
 Katelyn Kimball
 John and Lesley Kostyszyn
 Robert and Betty Kostyszyn
 Kimberly Laberge
 Denis and Kathy Landry,
 Monique Cote, Claude and
 Gloria Landry, Rene and Louise
 Landry, Richard and Louise Robert
 Andre and Cecile Langlois
 Thomas and Erica Langlois
 Marc and Linda Lavoie
 Rene and Marie Lavoie Δ
 Anne and Robert Leveque
 Lewiston High School
 Ruth Linehan
 Jenny Lovering
 Denis C. Marcotte
 Roland Metayer and Claire Breton

ANNUAL DONORS, CONTINUED

Diane Marquis Monaghan and John Monaghan
 Chloe and Hunter Martin
 Sandy Masters
 Robert W. Medlen
 James and Valerie Mickalide Δ
 Fr. Ray Morency
 Chip and Jane Morrison Δ
 George N. Morrisette
 MSEA – Androscoggin Chapter
 Jeffrey and JoAnn Newell
 Dennis and Jessica Olmstead
 Robert and Gloria Ouellette
 Samantha Ouellette
 Mary K. Paradis
 Rejean and Jacqueline Pare
 Kasey Pelletier
 Linda Pepitone and Family
 Elizabeth A. Petrocelli
 Paul and Doris Poirier Δ
 Jean L. Potuchek

James Pross and Mia Poliquin-Pross Δ
 Kathy Pross
 Dr. and Mrs. Paul E. Raczynski
 Roquiza Reboquio
 Erica Richards
 Diane Robarge
 Mark Salisbury
 Andrea M. Schademan
 Diana Smith
 Douglas Smith and Mary Beth Taylor
 Laycee Smith
 Rebecca Stevens
 Mary Sylvester
 Lena Theriault
 Jim and Denise Timberlake
 Uncle Moe's Diner Inc
 United Way of Greater Portland Δ
 United Way of Mid Coast Maine Δ
 Unitil

Douglas and Monique Weber
 Karen Westcott,
 Gary and Krista Chamberland,
 Robyn and Jacob Cole,
 Roger and Lynda Young
 Phyllis W. Wilkins
 Alan A. Wilson
 Andie Wishman
 Alan and Robin Withee Δ



Theresa Samson

Names with Δ after them are members of *The Samson Society*, which exists to recognize St. Mary's most loyal donors — those who give in three or more consecutive years. Donors who give year after year are the backbone of St. Mary's Health System Foundation. *The Samson Society* is named for Theresa Samson, one of St. Mary's most committed donors, in honor of her steadfast commitment to St. Mary's Mission.

Every effort has been made to ensure the accuracy of our donor lists. If you have corrections or would like to change how we publish your name(s), please call 207.777.8863 or email foundation@stmarysmaine.com.

CHARITY CARE BY THE NUMBERS

In 2021, St. Mary's invested \$66,825,875 in charity care and unreimbursed costs as part of our mission to make sure that every member of our community has access to compassionate health care.



\$43,475,045

Unreimbursed Cost
of Caring
for Medicare Patients



\$18,511,798

Unreimbursed Cost
of Caring
for Medicaid (MaineCare) Patients



\$4,839,032

Charity Care

STRENGTH IN NUMBERS



10 COMMUNITY GARDENS
supporting **148 HOUSEHOLDS**



23 MISSION GIVING BASKETS
sent to community agencies



95% OF HOUSEHOLDS
with a garden plot say they eat more vegetables



300 HOMELESS YOUTH
supported through “the store next door”
at Lewiston High School



50 PEOPLE AND \$31,700+
supported through the
Marguerite d'Youville Fund



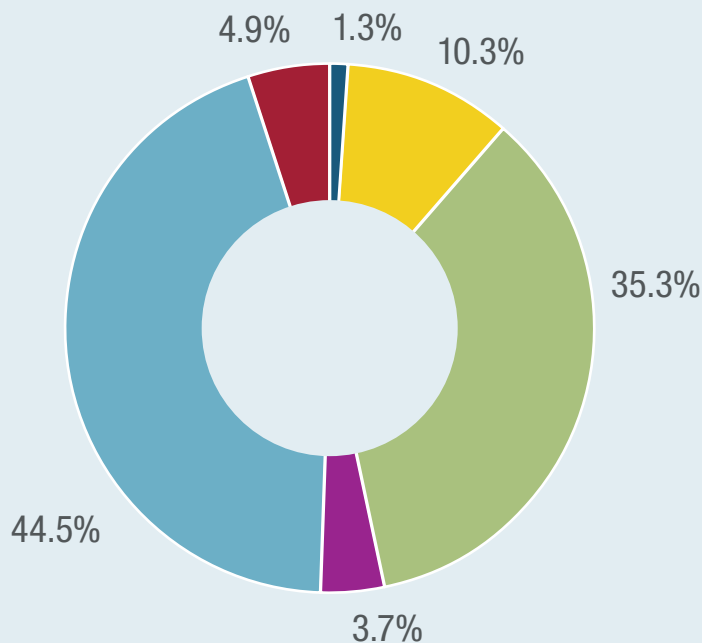
34 FAMILIES
adopted for Christmas



25 VACCINE CLINICS
held in the community

“ I’m proud to be a small piece of all these amazing things that are happening.”

WHO SUPPORTED ST. MARY'S IN 2021



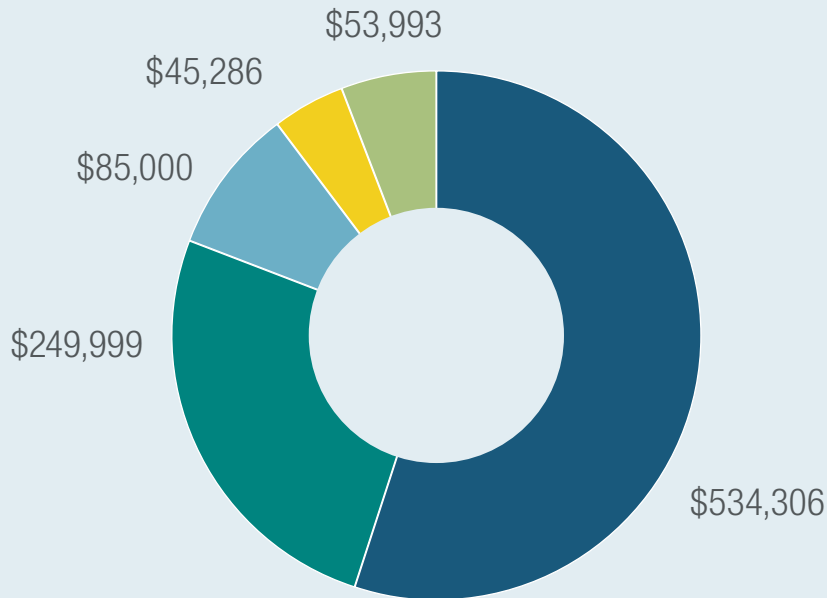
- Board
- Corporations/Associations
- Employees
- Foundations
- Individuals
- Physicians

This chart displays **who supported St. Mary's** by the number of donors in each category. With around 80% of our donations coming from individuals and employees, it is not hard to see the power your one gift can have when combined with others in our community.

Thank you for being so supportive of St. Mary's this year!

To find out more about how we use your gifts, please visit stmarysmaine.com/funds.

TOP 5 DONOR-SUPPORTED FUNDS IN 2021



- Capital Campaign
- Patient Experience
- *Commit to Get Fit* (Nutrition Center & Marguerite d'Youville Fund)
- Nutrition Center
- Annual Fund

This chart shows the total dollars raised for each of our **top supported funds in 2021**. This year your gifts showed a dedication to capital improvements, the patient experience, the Nutrition Center and the Annual Fund. Annual Fund, unrestricted, dollars are always appreciated. They allow St. Mary's Health System to fund the greatest need at any moment.

Thank you for supporting the programs that meant the most to you.



WHEN YOU GIVE TO ST. MARY'S HEALTH SYSTEM FOUNDATION,

your gift stays right here in Greater Lewiston-Auburn, providing expert and compassionate care to those in need.

GIVE NOW

You can direct your gift to any area of the hospital or donate in honor or memory of someone. No matter what you give, your annual support makes a positive difference. You can always give easily and safely online at stmarysmaine.com/give.

GIVE LATER

Leave your legacy with a bequest that can be tailored to support the cause or department you care most about. Many planned giving options also offer financial and tax incentives.

WANT TO KNOW MORE?

Visit stmarysmaine.com/foundation, call the Foundation Office at 207.777.8863 or email foundation@stmarysmaine.com.

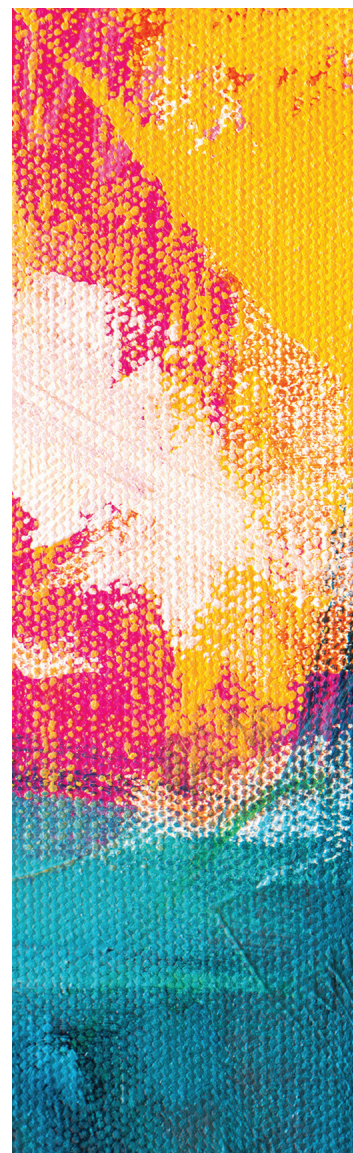


PO Box 7291
Lewiston, ME 04243

A Member of Covenant Health

Address Service Requested

Nonprofit Org.
US Postage
PAID
Snowman Group



Love & Hope

stmarysmaine.com/foundation